



IT'S ED SCHOEN
THE LOG HOME GUY!

Growth Rings 2011-2012

www.loghomeguy.com



So nice to come home to.

Ed & Jean Schoen
Schoen Custom Log & Country Homes
65 Co. Rd. #6
Phelps, NY 14532
315-946-4360 585-734-1004
edschoen@hughes.net

The year 2011 had a "wet" late spring followed by a bone-dry late summer and a mixed fall. Winter has still to hit the Northeast. Both Europe and Japan had "meltdowns" while elected officials here struggled, at best, to address the real issues,



posturing for self-interest instead. 2011 will be another year of "politics".

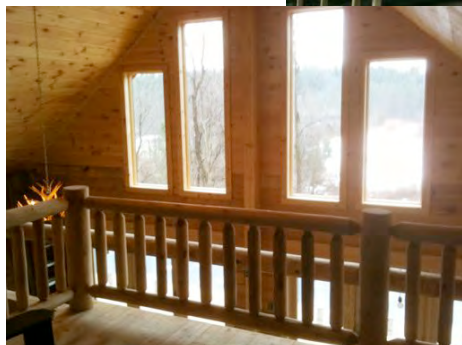
In March, we celebrated the completion of Curt and Patty James' Real Log Home in Naples, NY with an open house to share with the public.



For Curt, the shorter drive to school has been a blessing and Patty seems to like the "wind-down" time she has coming back from Strong.



The "log living" has been a dream for them and now that it is their reality, life is pretty special.



In the mid 70s, Bill Scheg and friends built a pre-cut "Royalton" Real Log Home in LeRoy, NY, and over the years, he and Peg made it very special.

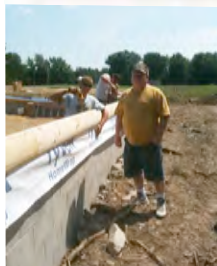


Together, they built a successful business, Genesee Valley Taxidermy and Shooting Supplies, serving

the hunting and recreational interest of the area. They were able to travel to the many corners of the world bringing back many exotic species to share the ecology with schools and other interested groups.



Just before Thanksgiving 2010, an electrical fire started in the business and spread to their home and, despite the great efforts of several local fire companies, the entire home and business were lost. I was contacted to design a



new custom Real Log Home on the same basement that was more contemporary, had natural light, laundry and master bedroom suite on the main floor, a loft, hot tub room, and a great room that just begged for more "good times". Porches and decks were added for additional recreational space. Once the 2,200 sq. ft. design

came together, it was decided to scrap the existing foundation and install a Precast Superior Wall to match up with the existing garage block foundation.

